

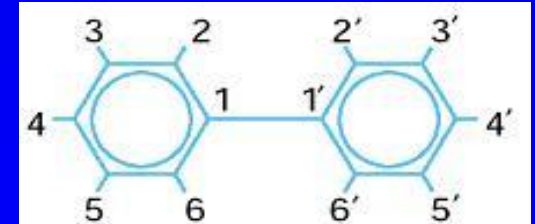
**Prenatal PCB & Mercury
Exposures & Subsequent
Neurobehavioral Development**

**Susan Korrick, MD, MPH
Harvard Medical School
Harvard School of Public Health
Brigham and Women's Hospital
February 7, 2013**

Polychlorinated Biphenyls

PCBs

Lipophilic, slowly metabolized
U.S. ban in 1977 but persistent
Exposure: food, soil/sediment, air
Concentrate in fatty tissue (breast milk)



Health Effects:

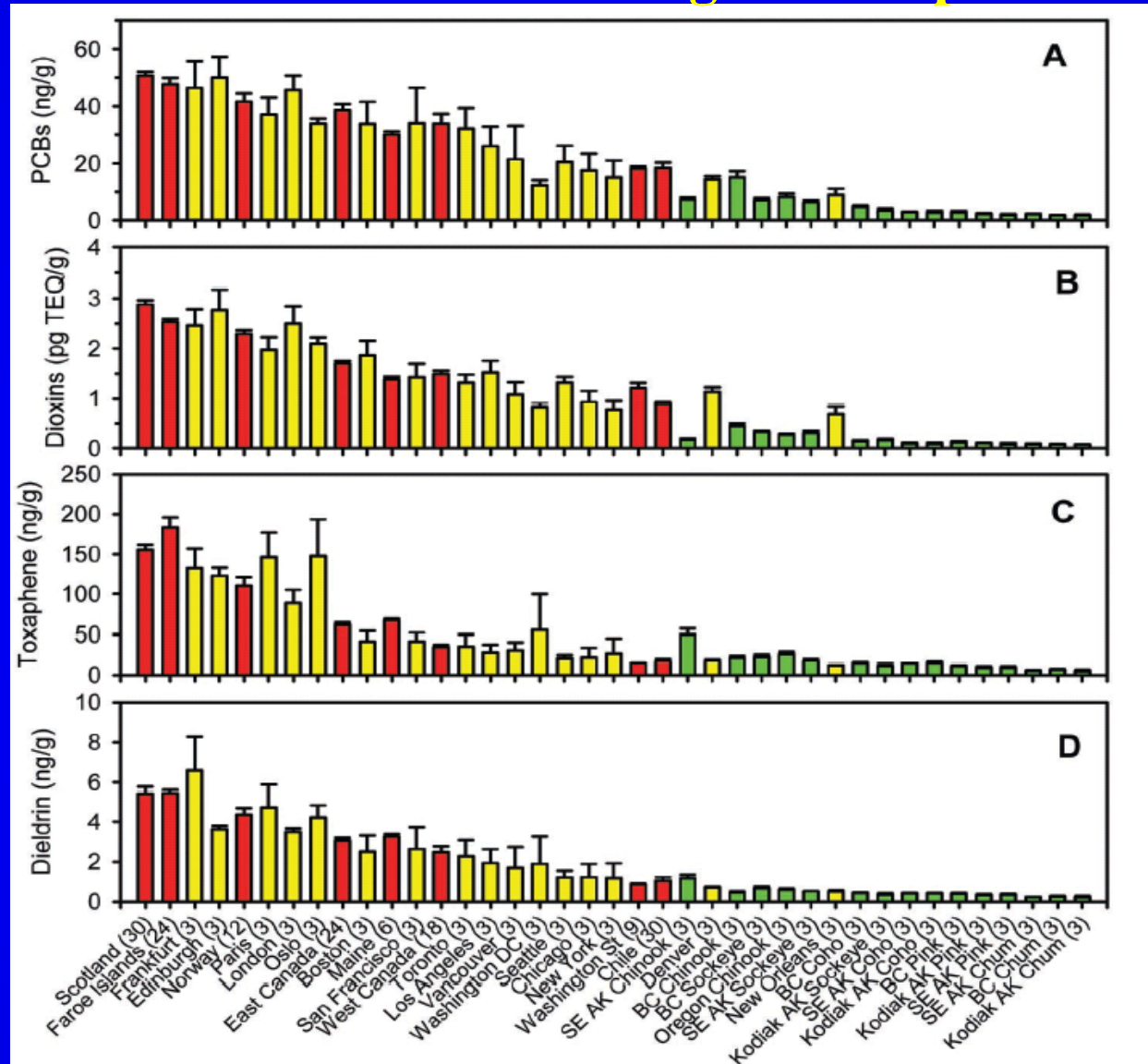
Probable human carcinogen
Structural teratogen
Growth impairment
Neuromuscular & psychomotor development
Cognition

Behavior

Other:

- Thyroid function
- Immune function

Concentrations of PCBs, dioxins, and pesticides versus location where salmon were grown or purchased



Red = Farmed, Green = Wild, Yellow = Supermarket

Mercury (Hg)

- Multiple forms: elemental, inorganic, organic (**methylmercury, MeHg**)
- Sources of mercury:
 - Natural
 - Industrial
 - Waste incineration
 - Burning of fossil fuels
 - Smelting
 - Medical/lab instrumentation
 - Methylated by bacteria in aquatic environment
- Toxicities of mercury:
 - **Neurotoxicity (MeHg)**
 - Renal
 - Immune



Study Goals

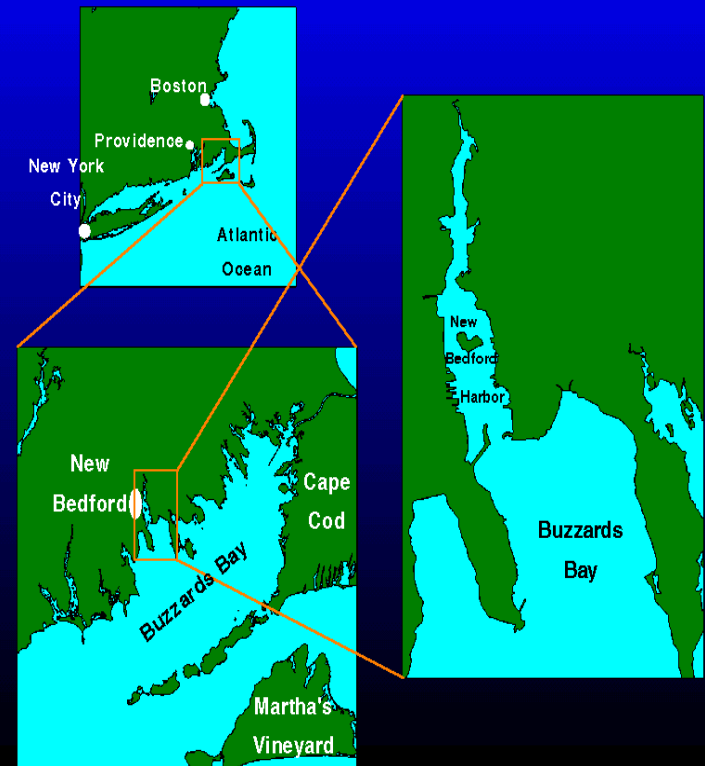
Assess relation of low level *in utero* PCB and MeHg exposures with prospectively measured:

- (1) Growth and maturation
- (2) Cognition
- (3) *Behavior*

History of New Bedford Study Site

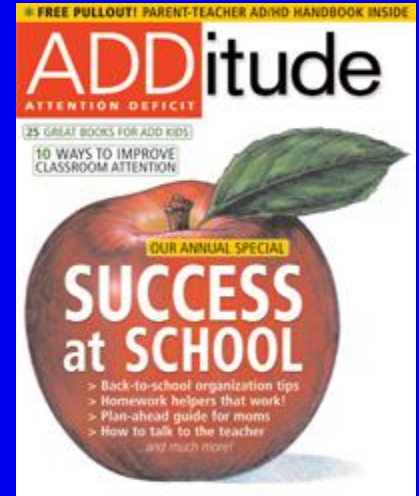
- **1940s-70s: Discharge of PCB-laden waste**
- **1970s: Contamination discovered in Harbor**
- **1977: PCB production banned in U.S.**
- **1979: Harbor closed to fishing**
- **1982: Harbor on EPA National Priority List**

Study Location: New Bedford Harbor, MA, USA

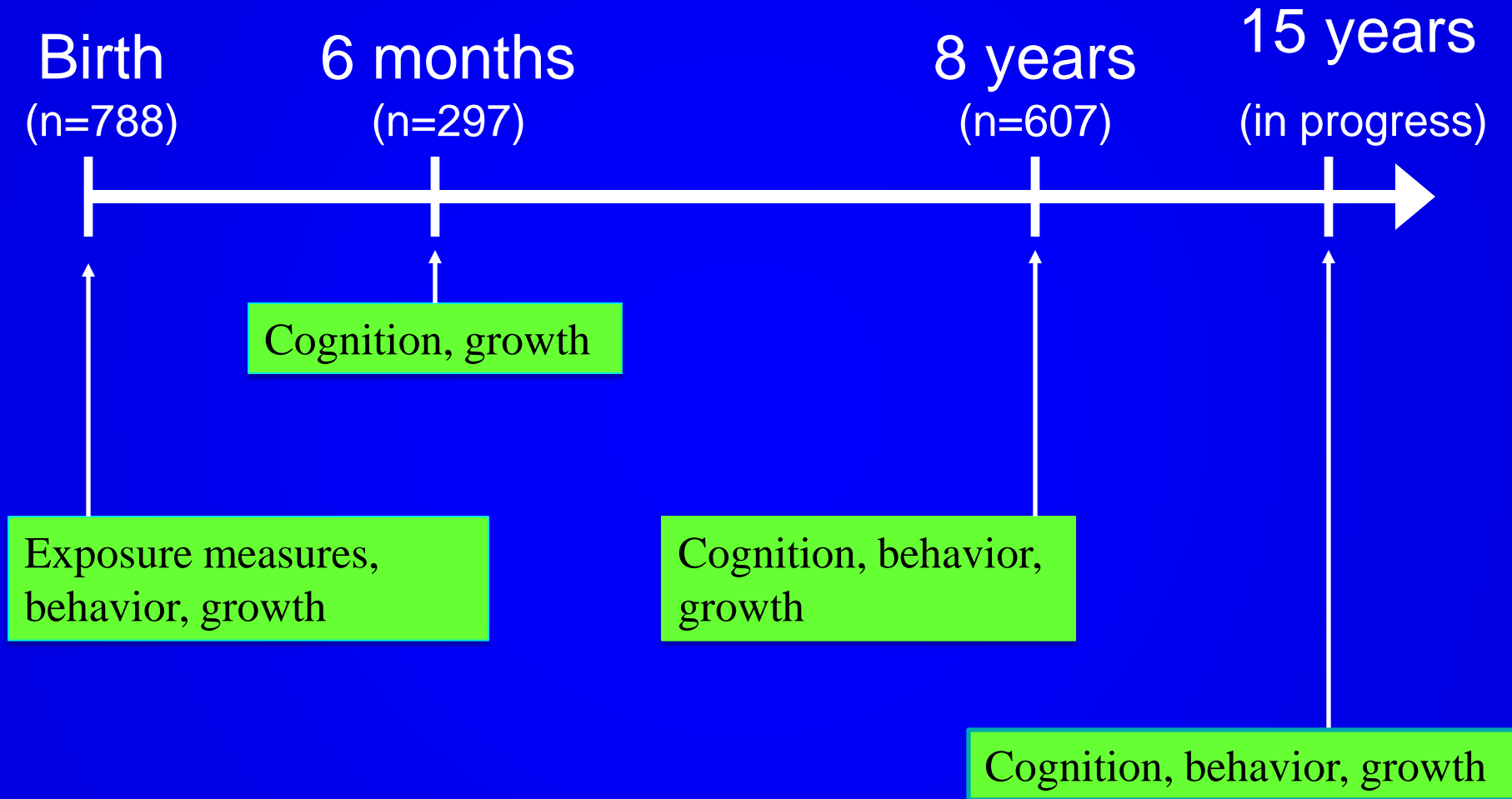


Attention Deficit-Hyperactivity Disorder

- Most common neurobehavioral disorder of children (6-12% worldwide)
- Risk factors poorly understood
- Clinical diagnosis (no specific test)
- Neuroimaging: ↓brain volume
- Mechanism: “dopamine deficit”
- Deficiencies:
 - vigilance-attention
 - cognitive control (working memory, impulse ctrl)
 - motivation



Study Design

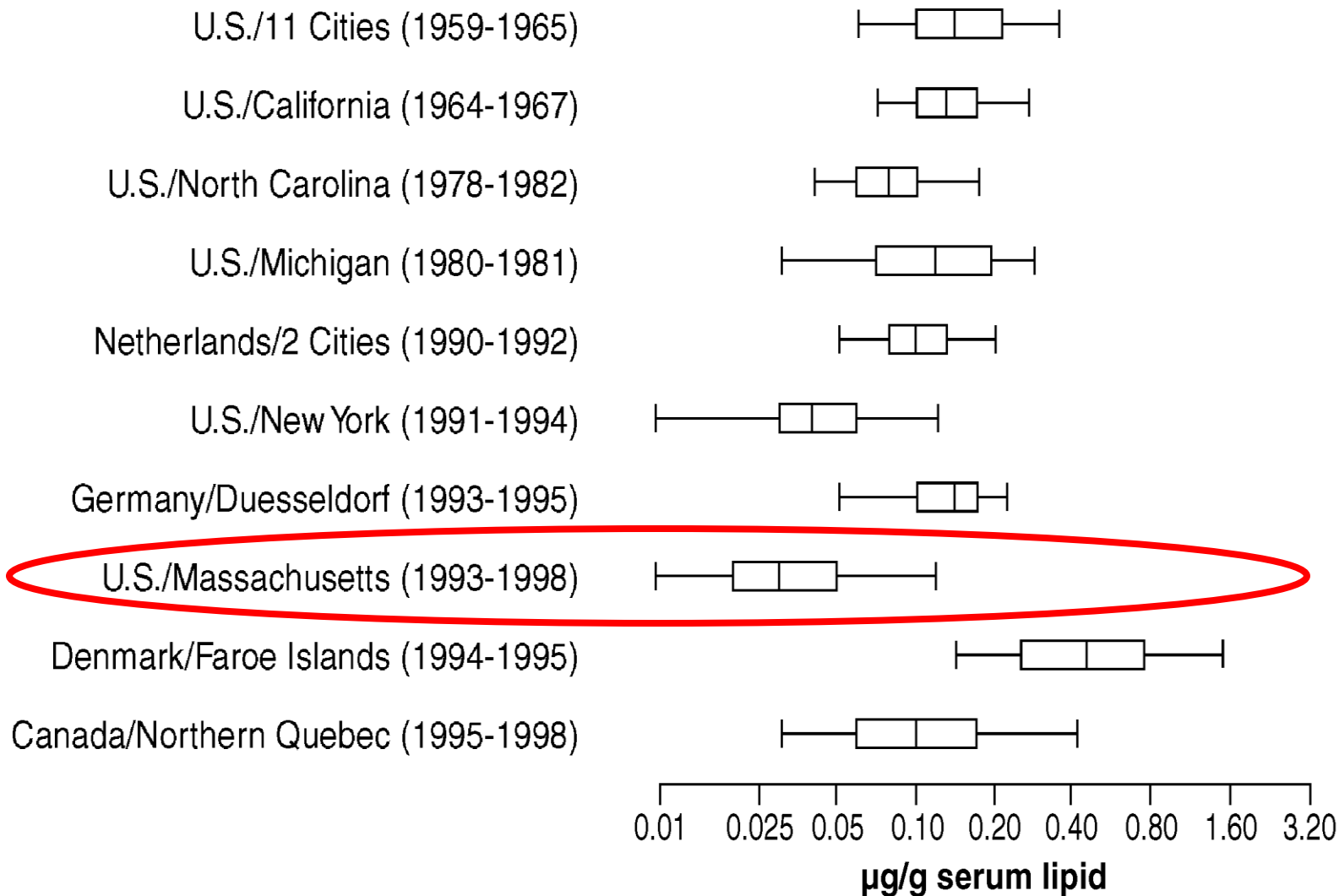


Study Population

CHILD CHARACTERISTICS	%	Mean (range)
Age at exam (yrs)		8 (7-11)
Male	51	
Race		
Caucasian	69	
Cape Verdean	11	
Other	20	

MATERNAL CHARACTERISTICS	%	Mean (range)
Age at infant birth		27 (17-41)
Smoked during pregnancy	30	
Married when child is school aged	59	
Some college	57	
Breastfed	36	
Household income <20,000	21	

Distribution of PCB 153 concentration in serum, 10 studies



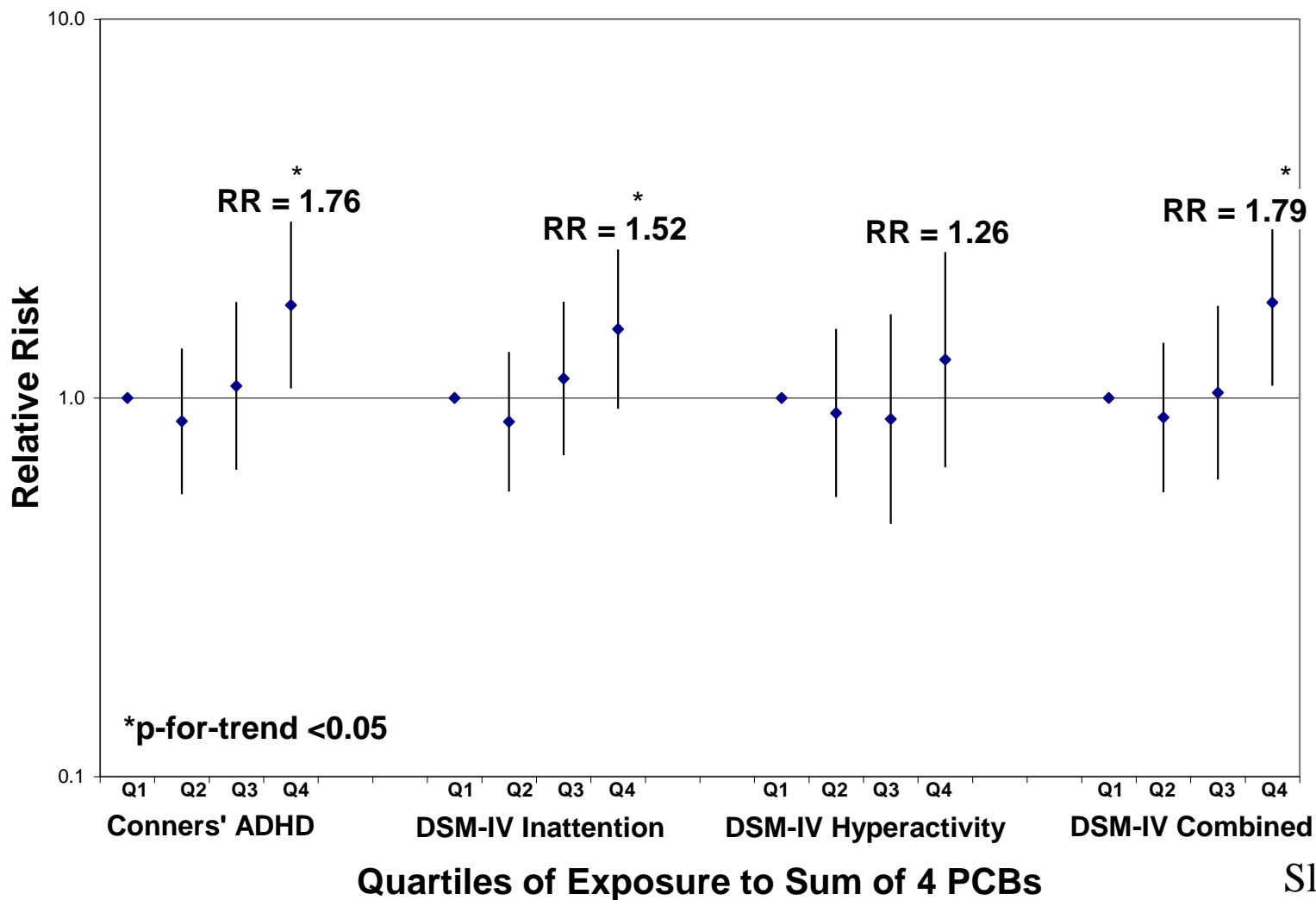
Outcome: Behavioral Rating Scale

- **Conners Rating Scale – Teachers (CRS-T)**
 - 59 item questionnaire, problem behaviors
 - Used in clinical dx, monitoring, research
 - Analyzed 4 subscales:
 - Conners' ADHD Index
 - DSM-IV Inattention
 - DSM-IV Impulsivity-Hyperactivity
 - DSM-IV Combined



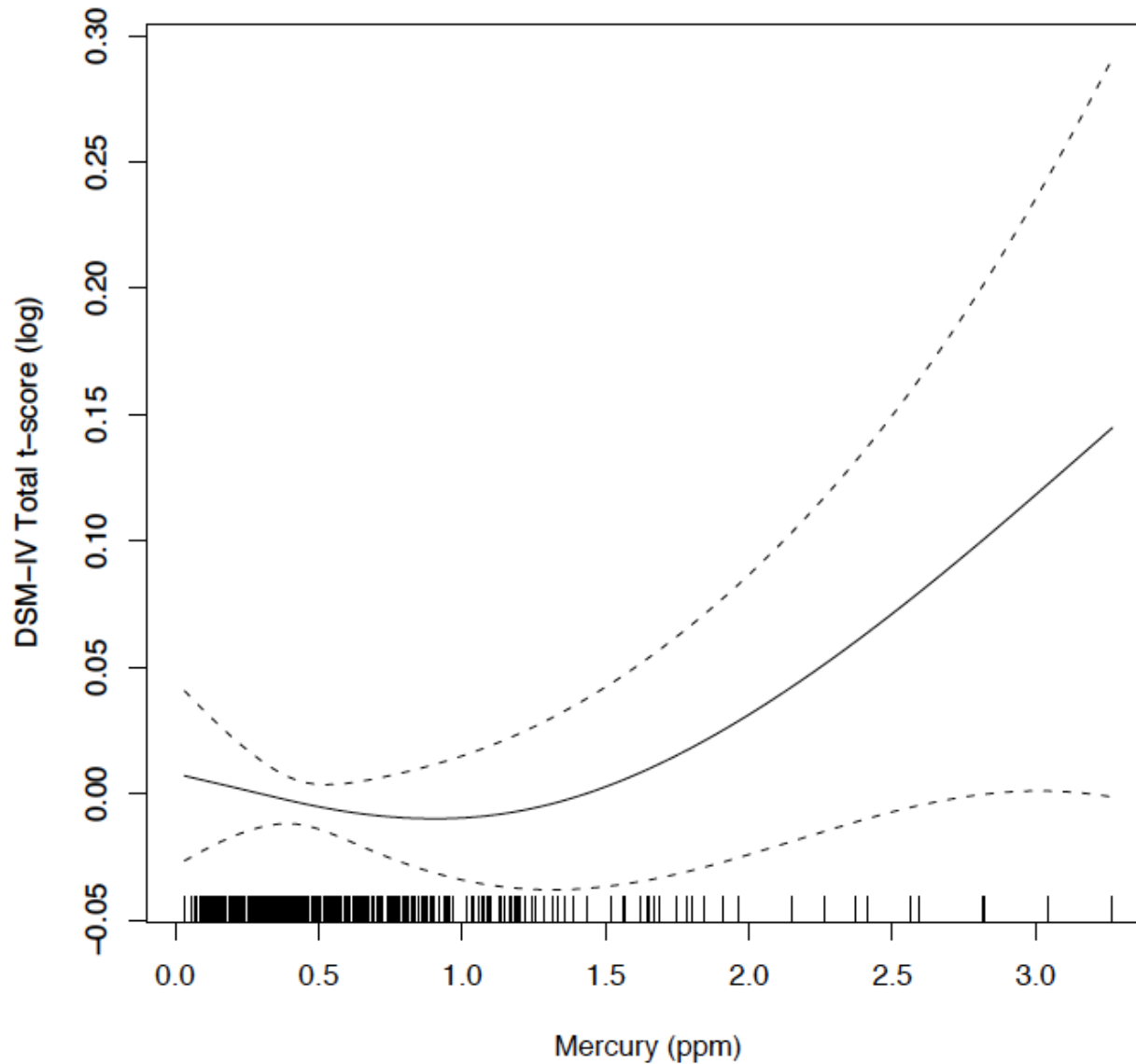
PCBs & Conners' Rating Scale (teachers)

Sagiv et al. Am J Epidemiol 2010



Maternal Hair Hg & ADHD Behavior at age 8

Sagiv et al. Arch Pediatr Adolesc Med 2012



Summary: Environmental Contaminants & Behavior in the New Bedford Cohort

**↑ADHD-associated behaviors were associated with:
Prenatal PCBs
Prenatal MeHg (> 1ppm)**

of note

**↓ADHD-associated behaviors were associated with > 2
servings fish/wk in pregnancy**

Collaborators

Channing Laboratory (BWH)

Chitra Amarasirwardena (MSSM)

Trace Metals Laboratory

Harvard School of Public Health

Larisa Altshul

Anna Choi

Richard Monson

Marisa Oge

Sara Orenstein

Louise Ryan

Sharon Sagiv (Boston U.)

U. of Rochester

Sally Thurston

Boston Children's Hospital

David Bellinger

Barry Brazelton

Ramzi Nasir

Kevin Nugent

Emory University

Paige Tolbert

CDC Virlyn Burse

Larry Needham

U. Massachusetts

Xiufeng Wu

Simon Fraser University

Scott Venners